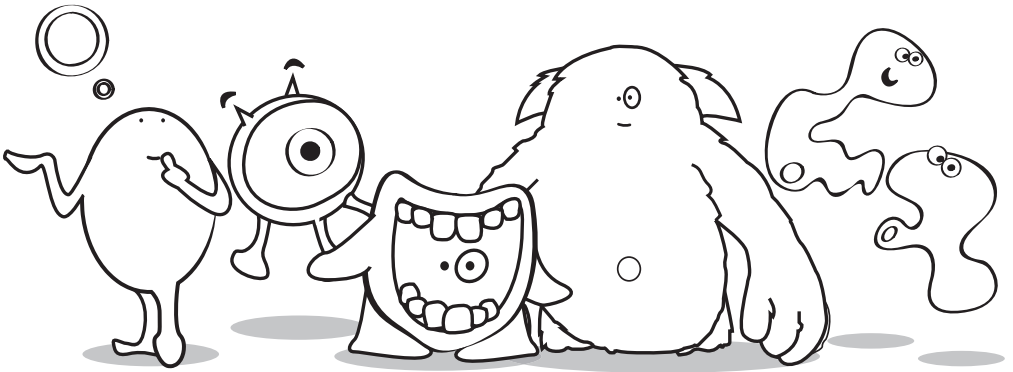


# an6mix



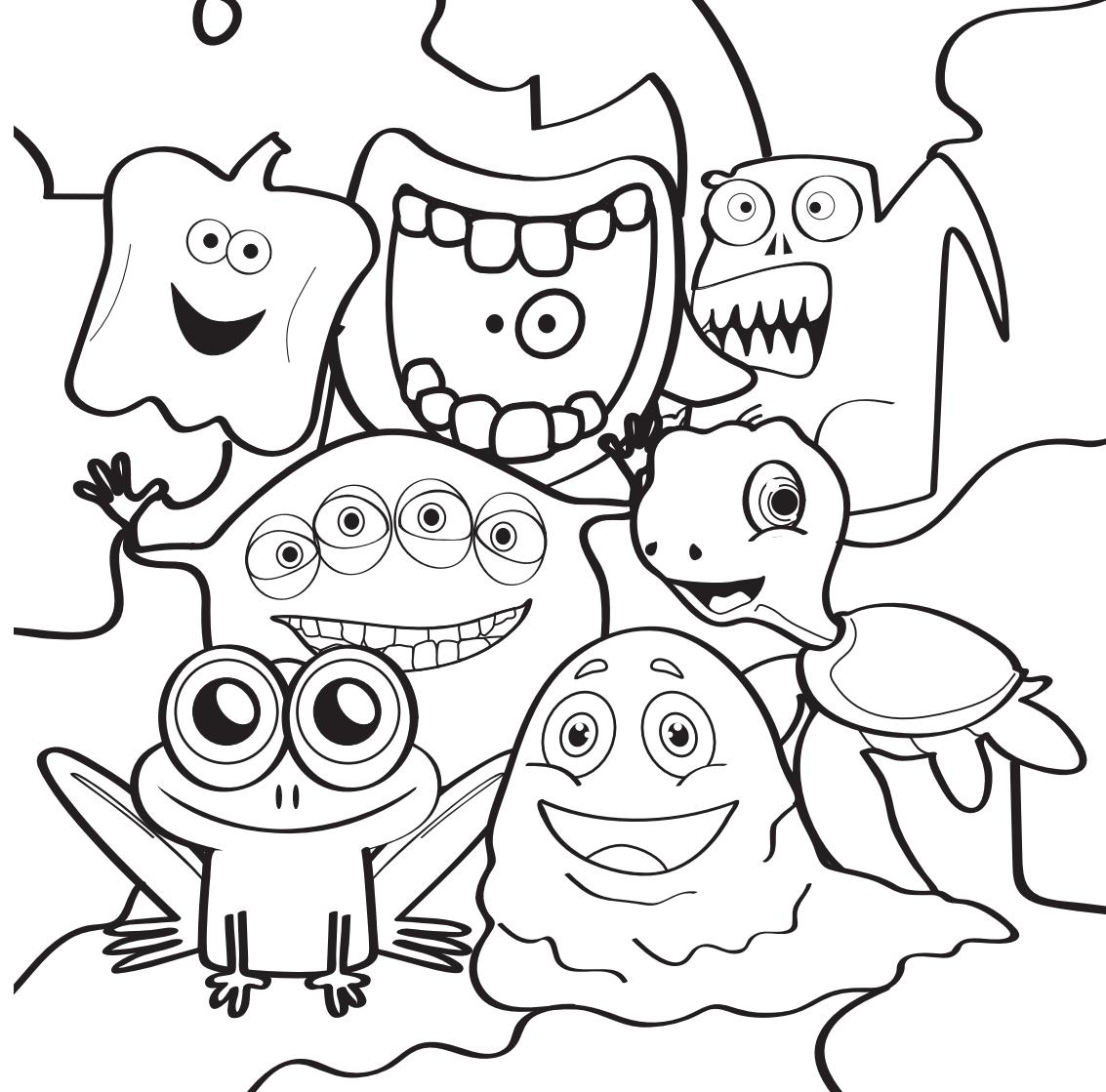
Where's The Gang?

Can you find each Anamix 6 character hidden in the pictures and then colour them in?

A black and white line drawing of a group of cartoon monsters. In the center is a large, round monster with a single eye and a wide, toothy grin. To its right is a smaller, round monster with a single eye and a small horn. Above them are two smaller, ghost-like monsters with large eyes. In the foreground, a small, round monster with a single eye and a small horn is looking up at the larger monster.

This is Megabyte's page. He has hidden himself amongst some very funny looking characters!

Maybe colouring in the picture will help you find him?





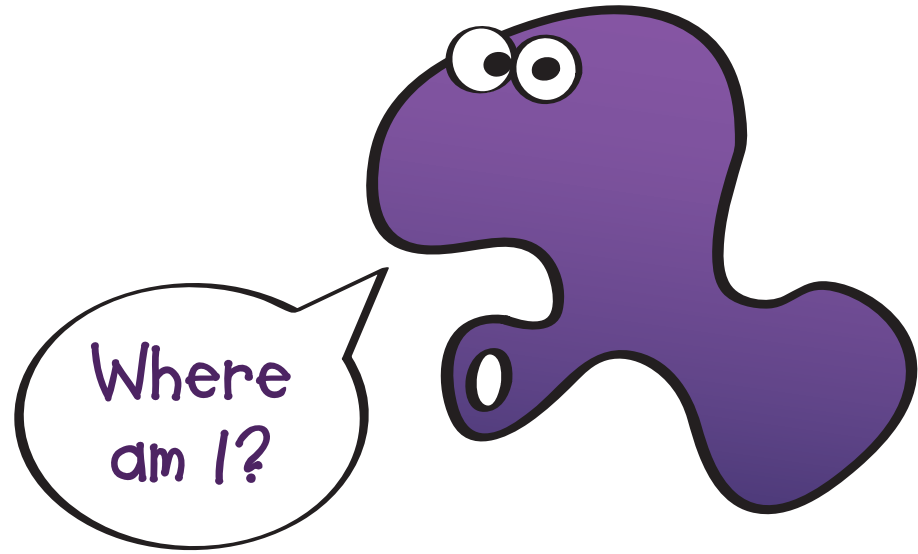
Brains is so clever he always finds the best places to hide. Will you find Brains in this picture?  
Good luck!



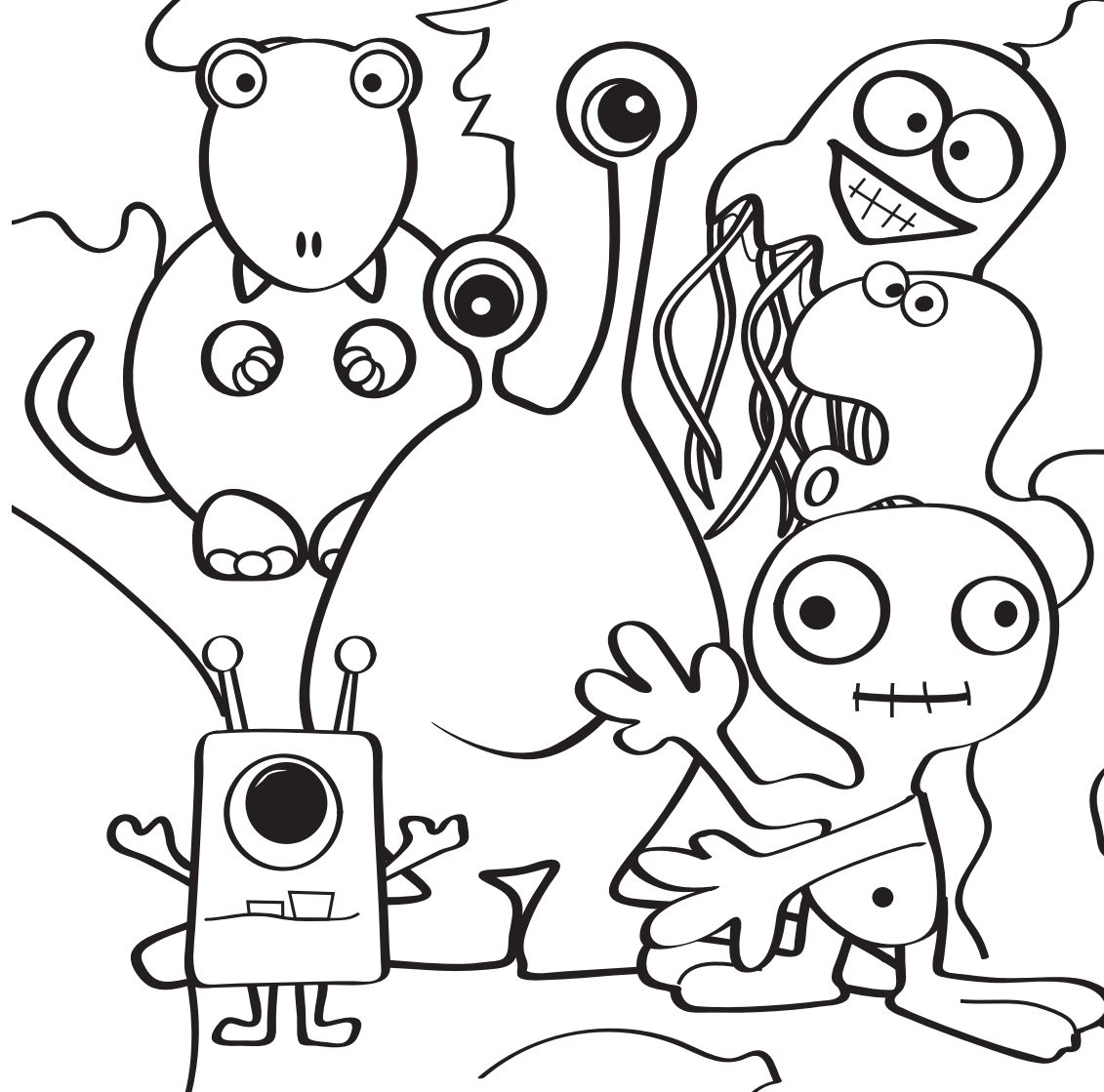


Bones is the biggest of all the Anamix 6,  
but can you find him hidden in this picture?

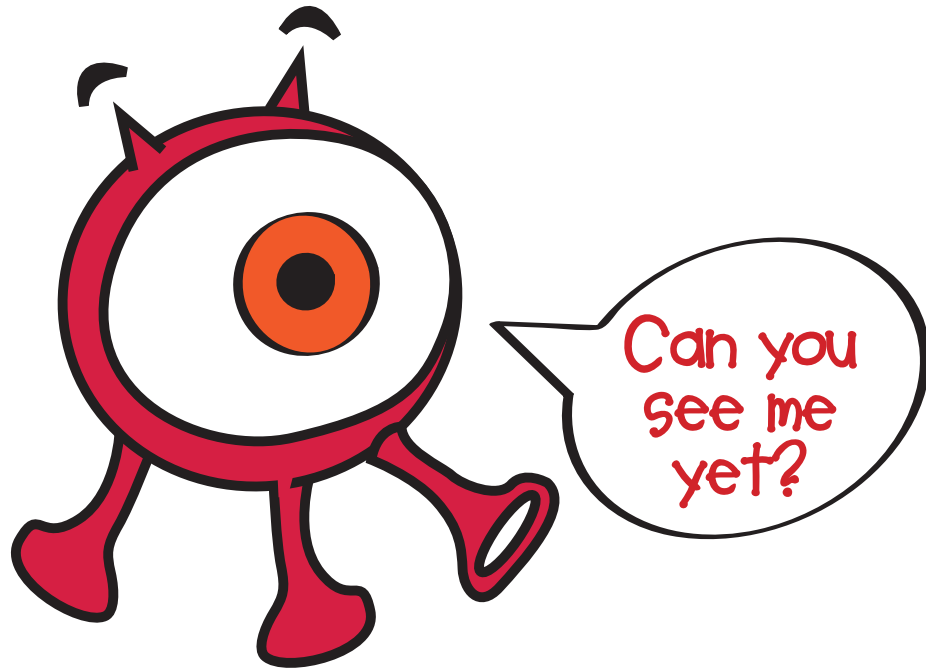




One of the Omega Twins has hidden away!  
We're sure you'll be able to find him  
soon though!



Where is Big Eye? Can you see him?  
He can see you!



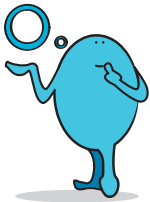


Can you find the Omega Twin amongst all his funny looking friends? He's in here somewhere!





# anamax



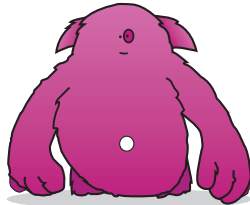
Brains



Big Eye



Megabyte



Bones



Omega Twins