

FLOCARE[®] NASOGASTRIC TUBE

INSTRUCTIONS FOR USE

Only perform placement if you have been trained and feel confident to do so, and the managing healthcare professional has given you permission

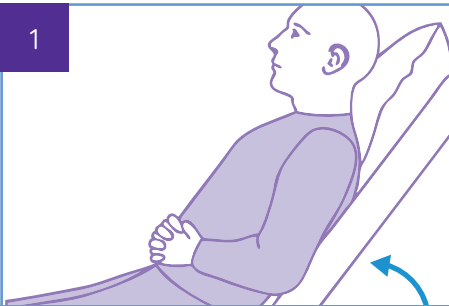
YOU WILL NEED:

- Flocare nasogastric tube
- A 60ml syringe
- pH strips, CE marked for use on human gastric aspirate
- Water for flushing
- Tape/scissors
- Gloves

Check all expiry dates and wash hands thoroughly

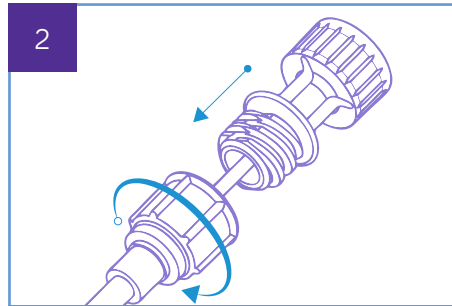
Open the packaging and lay contents on a clean dry surface

1



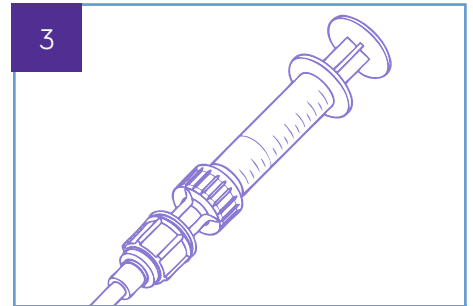
Explain the procedure to the patient and ensure they are in a comfortable sitting or semi-recumbent position

2



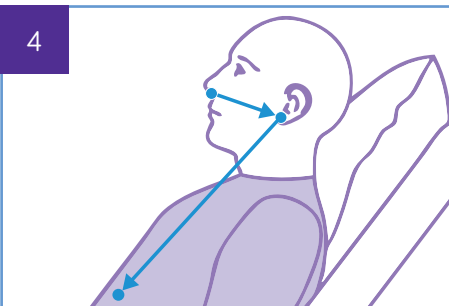
Fully insert the guidewire, ensure it is firmly attached to the connector

3



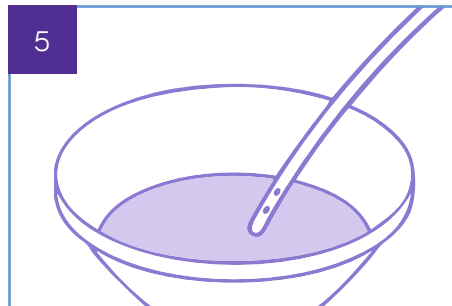
Flush the tube with 15ml of air

4



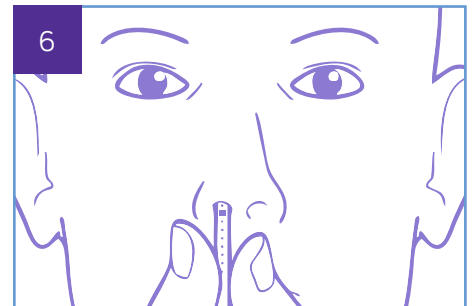
Measure the length of the tube: Place tip of tube from tip of nose to ear lobe to lowest point of sternum: note the measurement down

5



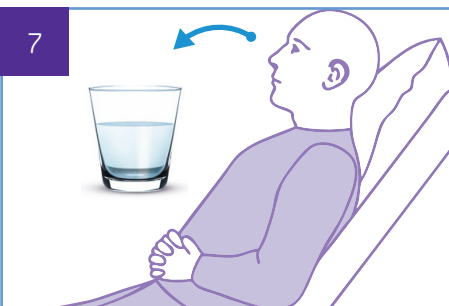
To assist insertion lubricate the tip of the tube by dipping it into sterile water

6



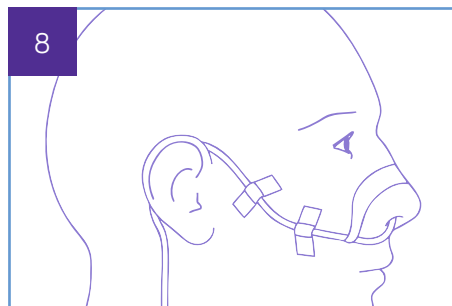
Advance the tip of the tube into the nostril, then gently slide it horizontally

7



When the tube reaches the throat, bend their head forward or, if possible, encourage them to take small sips of water

8

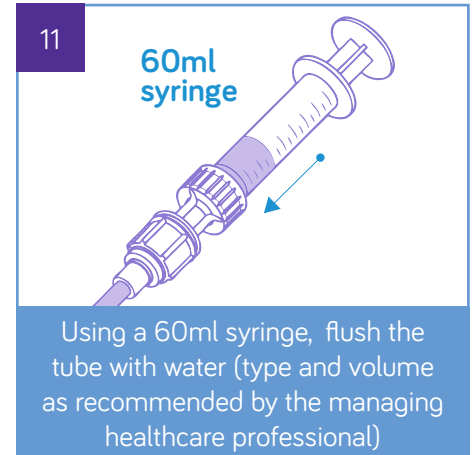
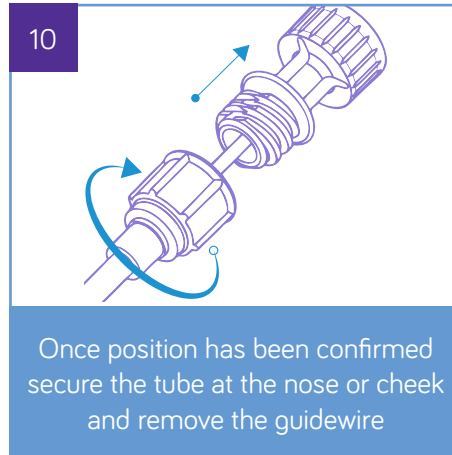
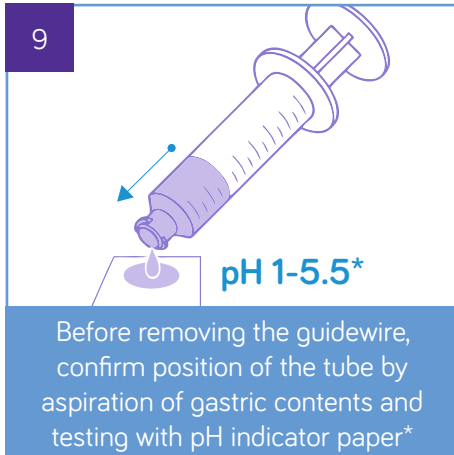


Continue to advance the tube until the mark is reached, then tape in place

PLEASE TURN OVER

FLOCARE[®] NASOGASTRIC TUBE

INSTRUCTIONS FOR USE CONTINUED



FEEDING MAY NOW COMMENCE

DAILY CARE GUIDELINES

Regular care and flushing of the tube will help to prevent the tube becoming blocked

The correct position of the tube, as described above, should be confirmed prior to administering anything down the tube, after a coughing fit or vomiting episode, or if the tube appears longer/shorter in length

Water should be administered before and after feed or medication delivery, or every 4-6 hours if feeding is not in progress (except during the night)

Check the cm mark at the nostril remains the same

Change the fixation tape if it become dirty or starts to peel off

*Due to variations with different manufacturers, pH measurement must always be confirmed numerically and should not be reliant on colour change.

